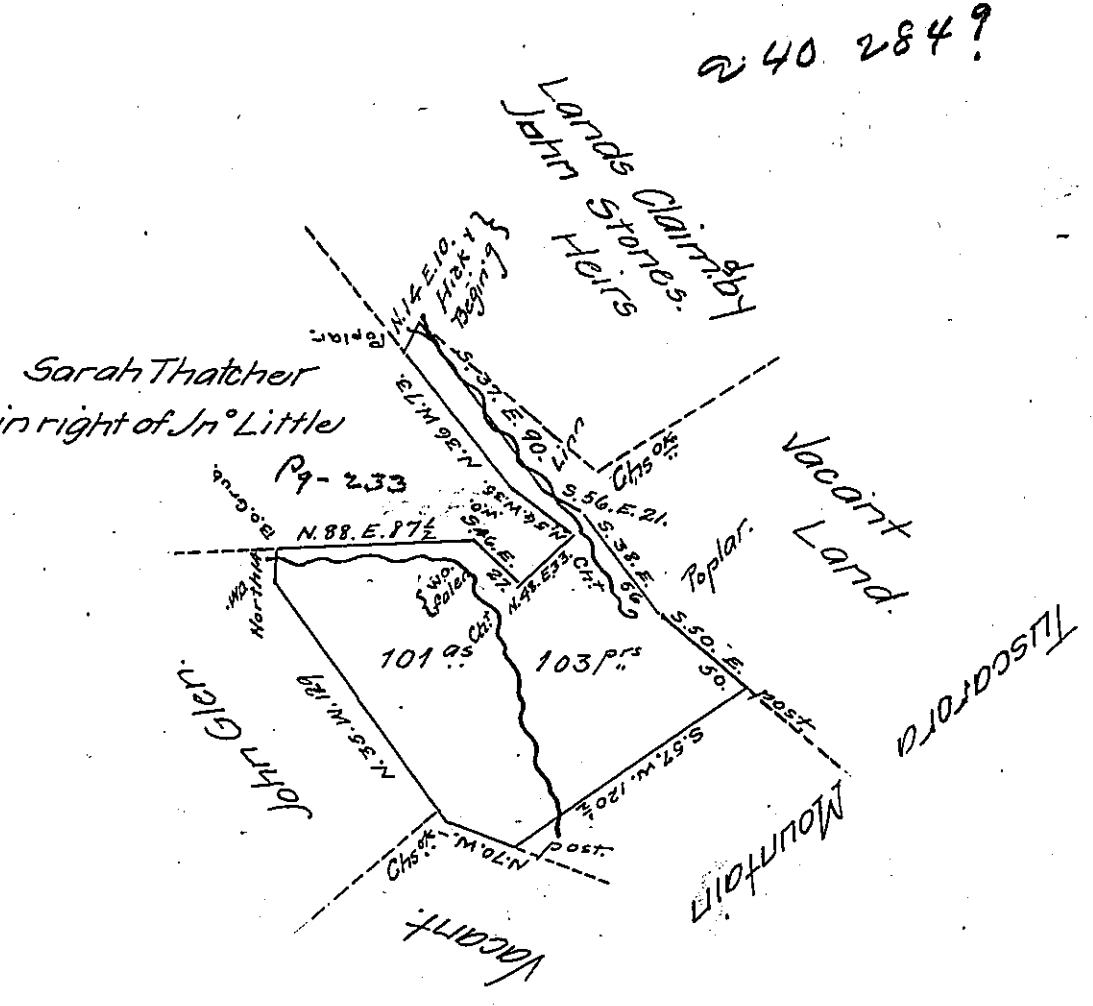


FORM No. 1.

Courses & Distances.

- S.37.E. 90 aLinn w^d
 - S.56.E. 21. Chs^{ok}
 - S.38.E. 56. Poplar.
 - S.50.E. 50. Post.
 - S57W. 120½ Post^d
 - N.70.W. 33¼ Chs^{ok}
 - N.35.W. 1.29. W.O.
 - North 14. B.O. Grub.
 - N88.E. 87½. w.o. fallen.
 - S.46.E. 27. Chesnut.
 - N.48.E. 33. Chesnut
 - N.56.W. 35 W.O.
 - N.36.W. 73. Poplar.
 - N.14.E. 10. Hick^y.
- The Beginning Co. }
 }
 }



Draught of a tract of land Situate in Lack Township Mifflin County
 Containing One hundred and one acres and 103 perches and the allow-
 ance of Six 7/8 Cent for roads &c Surley Began May 24th 1793 [by
 James Harris late Deputy Surveyor] and by me finish^d November
 30th 1805 In pursuance of a Warrant Granted to Sarah Thatcher
 dated the 27th day of November 1792^{os}

Wm Harris D.S.

To Samuel Cochran Esquire
 Sur^y Gen^l of Pennsylvania

IN TESTIMONY that the above is a copy of the original remaining on file in
 the Department of Internal Affairs of Pennsylvania, made
 conformably to an Act of Assembly approved the 16th day of
 February 1833, I have hereunto set my hand and caused
 the Seal of said Department to be affixed at Harrisburg,
 this Eighth day of March 1907.

Isaac B. Brown
 Secretary of Internal Affairs.